



BUSINESS INDICATORS

**AUSTRALIAN
CAPITAL
TERRITORY**

EMBARGO: 11.30AM (CANBERRA TIME) MON 21 DEC 1998

C O N T E N T S

	<i>page</i>
Notes.....	2
Summary of findings.....	3
Selected business indicators.....	5
FEATURE ARTICLE	
Families and Labour Force Status in the ACT.....	6
TABLES	
1 Business expectations: Sales, December quarter 1998/ September quarter 1998, expected aggregate change	10
2 Business indicators, December 1998	11
3 ACT in relation to the rest of Australia.....	14
4 ACT in relation to the rest of Australia—percentage changes	15

- For further information about statistics in this publication and the availability of related unpublished statistics, contact Jacki Grau on Canberra 02 6207 0446 or any ABS office shown on the back cover of this publication.

NOTES

FORTHCOMING ISSUES

<i>ISSUE</i>	<i>RELEASE DATE</i>
January	25 January 1999
February	22 February 1999
March	22 March 1999
April	19 April 1999
May	24 May 1999
June	21 June 1999

SYMBOLS AND OTHER USAGES

ACT	Australian Capital Territory
n.a.	not available
n.p.	not available for publication
p	preliminary
*	Represents data with a standard error of greater than 25%. Caution should be exercised when using this data.
—	nil or rounded to zero

Dalma Jacobs
Regional Director, Australian Capital Territory

SUMMARY OF FINDINGS

UPDATED SERIES

Series updated since the November 1998 issue are: labour force, industrial disputes, housing and construction, housing finance, retail turnover, motor vehicle registrations, average weekly earnings and house price index. The feature article on pages 6–9 is on Families and Labour Force Status in the ACT.

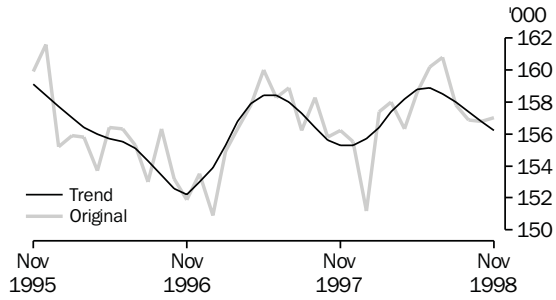
NOTABLE MOVEMENTS

- Labour force In November 1998, the trend unemployment rate for the ACT was 6.6%, a 0.1 percentage point decrease from the previous month and the lowest rate since August 1991. Trend employment decreased 0.4% (to 156,200 persons) and the trend participation rate dropped 0.4 percentage points to 70.9% from the previous period. Nationally, trend employment increased by 0.1% from the previous period and the trend unemployment rate dropped 0.1 percentage points to 7.9%.
- Industrial disputes For the 12 months ended August 1998 there were 33 working days lost per thousand employees in the ACT compared to a figure of 82 days nationally. In comparison with the previous year, there was an increase of 50% for the ACT and an increase of 30.2% nationally in the number of working days lost per thousand employees.
- Housing and construction The trend number of dwelling units approved in the ACT decreased by 14.6% to 129 dwelling units in October 1998. Nationally, the trend number of dwelling units approved decreased by 1.5% to 12,347 dwelling units.
- The value of non-residential building approvals in the ACT was \$3.8 million in October 1998, a decrease of \$30.5 million (down 88.9%) from the previous month and \$17.3 million (82.0%) lower than October 1997. Nationally, the value of non-residential building approvals increased by 18.4% from the previous month and was 9.2% lower than October 1997.
- Housing finance The trend number of dwelling units financed (including refinancing) in the ACT during October 1998 increased to 737 dwellings, a rise of 1.4% on the previous month. The trend estimate for the value of commitments in the ACT was \$84 million, an increase of \$2 million on the previous month. Refinancing of existing dwellings comprised 15.5% of the total value of dwelling units financed in October 1998, a 7.1% decrease on the previous month. Nationally, the trend number of dwelling units financed (including refinancing) during October 1998 was 36,891 which was a decrease of 2.0% on the previous month, while the trend estimate for the value of commitments decreased to \$4,490 million (down 0.8%) on the previous month.
- Retail turnover The trend estimate for retail turnover in the ACT for October 1998 was \$223.5 million, up 0.3% on the previous month's figure and up 4.6% on twelve months ago. The national trend retail turnover recorded an increase of 0.5% on the previous month and was up 5.0% on a year ago.

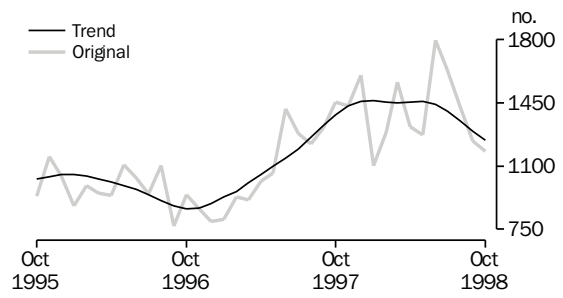
Motor vehicle registrations	The trend estimate for ACT new motor vehicle registrations in October 1998 was 1,243, down 3.8% on the previous month, and down 10.2% on October 1997. Nationally, the trend for total new registrations in October 1998 recorded a 2.0% decrease on the previous month, but up 4.0% on October 1997.
Average weekly earnings	The trend average weekly earnings in the ACT were \$732 in August 1998, an increase of \$52 (7.7%) since August 1997. Comparable national trend average weekly earnings were \$603 in August 1998, up \$17 (3.0%) since August 1997.
House price index	The established house price annual index for the ACT has continued to decline over the last four years. The decline for the ACT in 1997-98 was only 0.2 percentage points while nationally the index increased by 7.7 percentage points in 1997-98.

SELECTED BUSINESS INDICATORS

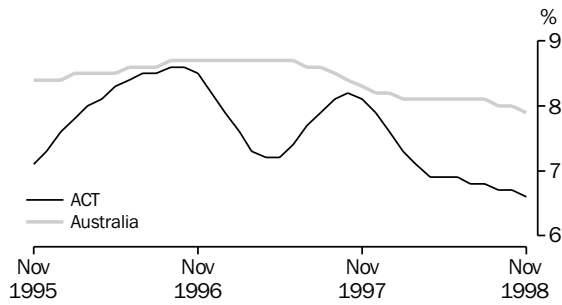
LABOUR FORCE—EMPLOYMENT



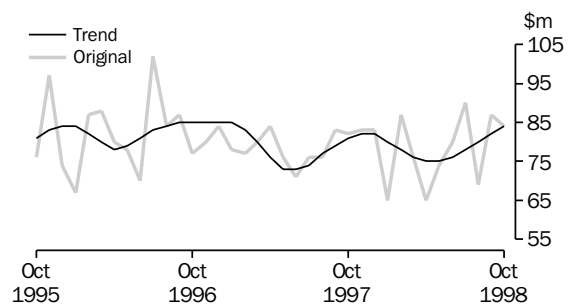
NEW MOTOR VEHICLE REGISTRATIONS



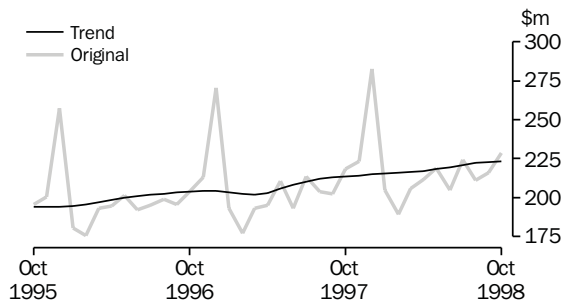
LABOUR FORCE—TREND UNEMPLOYMENT RATE



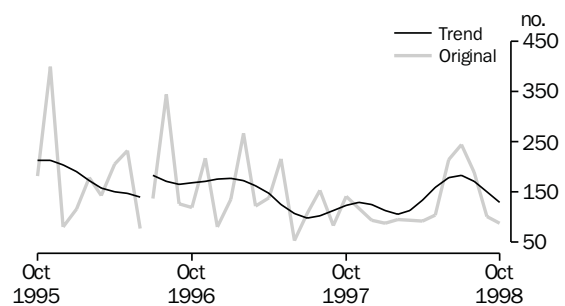
HOUSING FINANCE



RETAIL TURNOVER



BUILDING APPROVAL—DWELLING UNITS APPROVED



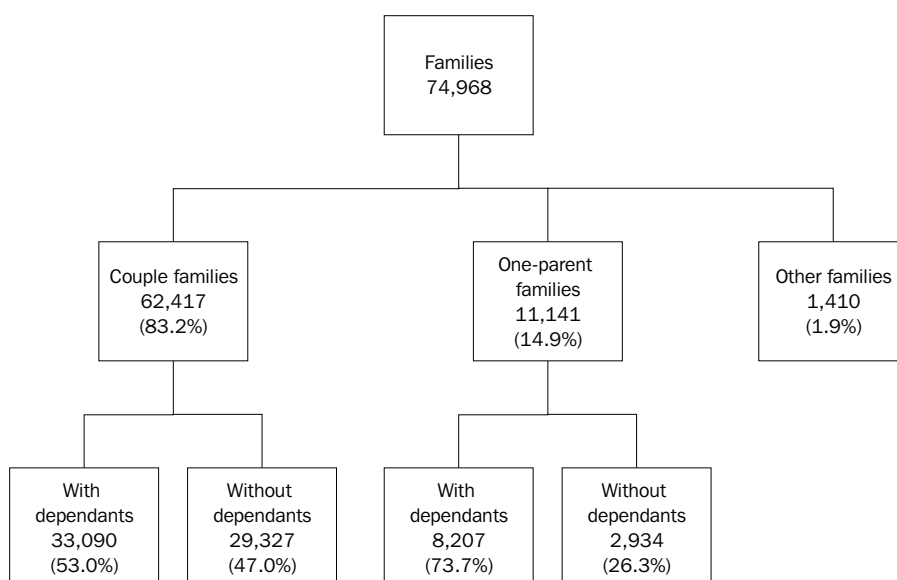
Note: For the period July to December 1996, 165 dwelling units and total building work of \$40.5 million (16%) had been incorrectly omitted from data reported to ABS. All series for the ACT have been revised from July 1996 and a trend break has been included in the graph.

In June 1998 there were 74,968 families in the ACT, a decrease of 798 (or 1.1%) since June 1995. The decrease in total families coincided with the Territory's negative net interstate migration (0.21% and 0.54% in 1995–1996 and 1996–1997, respectively). Of the families in the ACT, 55.1% (41,296) had one or more dependants (down 3,182 or 7.2% since June 1995), while the remaining 44.9% (33,671) had no dependants (up 2,382 or 7.6% since June 1995).

During the period June 1995 to June 1998, the number of couple families decreased 0.7% (418) to 62,417 while the number of one parent families decreased 6.1% (728) to 11,141. Nationally, the number of couple families and one parent families increased 2.6% and 18.2%, respectively, since June 1995.

FAMILY SIZE AND TYPE

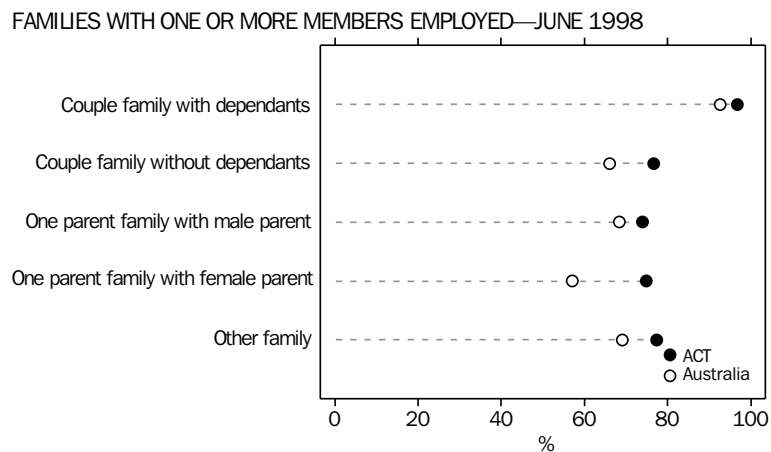
In June 1998 the average family size in the ACT was 3.06 compared to 3.22 in June 1995. As shown in the diagram below, the large majority (83.3%) of families in the ACT were couple families, more than half (53%) of which had dependants. Nationally, 48% of couple families had dependants, with a greater proportion (52%) of couple families without dependants. The next largest family grouping in the ACT was one parent families (14.9%), slightly less than three-fourths (73.7%) of which had dependants. About 80.9% (9,018) of one parent families had a female parent and 19.1% (2,123) had a male parent. The remaining 1.9% (1,410) were classified as other families, that is, families in which there is no parent, and all reported to have no dependants. Nationally, 1.6% of all families were classified as other families.



ACT FAMILIES AND
EMPLOYMENT

In the ACT, families with dependants were more likely to have one or more members employed than families without dependants. In June 1998, 91.2% (37,681) of families with dependants had one or more members employed, a 3.4 percentage point increase since June 1995. In comparison, 77.9% (26,218) of families without dependants had one or more members employed, a 1.9 percentage point increase since June 1995. The percentage of couple families with both partners fully employed dropped from 36.6% in June 1995 to 34.7% in June 1998. Nationally, 83.8% of families with dependants had one or more members employed while 67.0% of families without dependants had one or more family members employed.

In general, the percentage of families with one or more family members employed was higher in the ACT than nationally, as illustrated in the following graph.



COUPLE FAMILIES WITH
DEPENDANTS

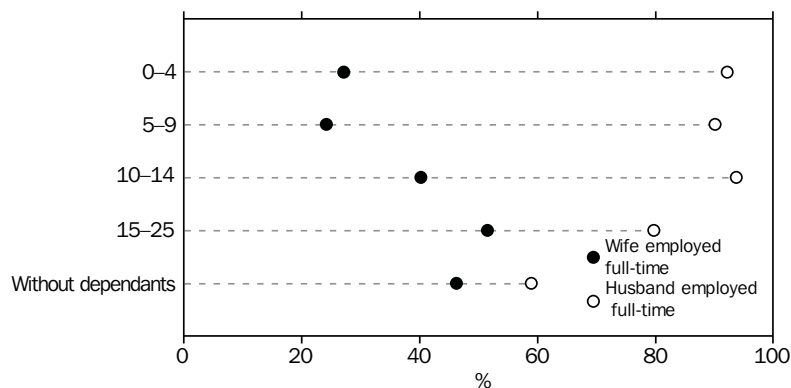
For couple families with dependants in the ACT, one or both partners were employed in 96.8% of these families, a 2.9 percentage point increase since June 1995. Nationally, one or both partners were employed in 92.6% of these families. In 0.6% of cases in the ACT, the husband was unemployed and the wife was either unemployed or not in the labour force, a 2.1 percentage point decrease since June 1995. Nationally, the husband was unemployed and the wife was either unemployed or not in the labour force in 3.9% of these families. Other key findings were:

- the husband was employed full time in 89.6% of cases (83.8% nationally);
- the husband was unemployed in 2.1% of these families (5.1% nationally);
- the wife was employed full time in 35.5% of cases (26.0% nationally); and
- the wife was unemployed in 1.4% of these families (3.3% nationally).

COUPLE FAMILIES WITH
DEPENDANTS *continued*

For couple families with dependants in the ACT, the percentage of wives employed full-time generally increased as the age of the youngest dependant present increased, as shown in the following graph. Similarly, the percentage of one parent families with the parent employed generally increased as the age of the youngest dependant increased.

COUPLE FAMILIES, BY AGE OF YOUNGEST DEPENDANT, PARENTS EMPLOYED FULL-TIME—JUNE 1998



COUPLE FAMILIES WITHOUT
DEPENDANTS

For couple families without dependants in the ACT, one or both partners were employed in 76.6% of these families, a 1.3 percentage point increase since June 1995. Nationally, one or both partners were employed in 67.0% of these families. In 2.7% of cases in the ACT, the husband was unemployed and the wife was either unemployed or not in the labour force. Nationally, the husband was unemployed and the wife was either unemployed or not in the labour force in 1.6% of these families. Other key findings were that:

- the husband was employed full time in 59.0% of cases (50.9% nationally);
- the husband was unemployed in 4.0% of these families (2.6% nationally);
- the wife was employed full time in 46.2% of cases (30.1% nationally); and
- the wife was unemployed in 2.3% of these families (2.0% nationally).

ONE PARENT FAMILIES

One parent families in the ACT had relatively higher labour force participation with only 32.0% of cases where the parent was not in the labour force compared to 49.0% nationally. In the ACT around 65.4% of parents were employed, 72.4% of which were working full-time and the remaining 27.6% were working part-time. Nationally, 43.3% of one parent families were employed.

Of the one parent families in the ACT, 73.7% (8,207) had dependants. Key characteristics of one parent families with dependents in the ACT were:

ONE PARENT FAMILIES

continued

- 67.9% of parents were employed and 29.9% were not in the labour force (respectively, 46.1% and 44.5% nationally);
- 69.4% of employed parents were working full-time (51.3% nationally), 85.1% of men but only 65.7% of women; and
- 2.1% were unemployed and were looking for full-time or part-time work (9.4% nationally). The male parents surveyed in the ACT were looking for full-time work only while the female parents surveyed were looking for part-time work only.

NON-FAMILY MEMBERS

In June 1998 there were 47,374 persons who were not members of a family in the ACT, with the majority (55.4%) of these people living alone. Of those living alone, only 14,385 (54.8%) were employed and 10,774 (41.1%) were not in the labour force. In contrast, 15,913 (75.3%) of people not living alone (but not members of a family) were employed. Nationally, 65.4% of non-family members lived alone, with only 43.9% of this group being employed while 51.5% were not in the labour force. In contrast, 74.7% of non-family members not living alone were employed.

The information in this article was based on responses from people included in the June 1998 Labour Force Survey. In this survey, family data were only collected for civilians aged 15 and over who were usual residents of private dwellings where all the usual residents were present and within the scope of the survey.

1**BUSINESS EXPECTATIONS: SALES**

	<i>ACT</i>	<i>Aust.</i>
<i>Period</i>	%	%
Short-term		
Jun qtr 1997–Sep qtr 1997	-1.7	0.7
Sep qtr 1997–Dec qtr 1997	0.6	3.0
Dec qtr 1997–Mar qtr 1998	-1.1	-0.3
Mar qtr 1998–Jun qtr 1998	-0.1	1.7
Jun qtr 1998–Sep qtr 1998	2.7	1.1
Sep qtr 1998–Dec qtr 1998	3.5	1.5
Medium-term		
Jun qtr 1997–Jun qtr 1998	2.0	2.4
Sep qtr 1997–Sep qtr 1998	1.2	3.9
Dec qtr 1997–Dec qtr 1998	2.9	3.0
Mar qtr 1998–Mar qtr 1999	2.6	2.6
Jun qtr 1998–Jun qtr 1999	6.9	2.7
Sep qtr 1998–Sep qtr 1999	7.5	2.8

Indicator	Unit	ACT			Aust.		
		% change from			% change from		
		Latest figure	Previous period	Same period previous year	Latest figure	Previous period	Same period previous year
POPULATION, VITAL AND LABOUR							
POPULATION, Mar qtr 98	'000	309.2	0.1	-0.3	18 709.7	0.4	1.2
Natural increase	no.	473	-50.3	-35.0	30 868	-3.1	-8.8
Net migration	no.	-282	-76.3	-137.8	47 719	349.4	52.7
Total increase	no.	191	-180.3	-87.1	78 587	85.0	20.7
LABOUR FORCE, Nov 98							
Original Series							
Employed	'000	157.0	0.1	0.5	8 653.1	-0.4	1.5
Unemployed	'000	9.8	-3.9	-21.6	710.5	3.6	-3.6
Unemployment rate	%	5.9	-0.2	-1.5	7.6	0.3	-0.4
Participation rate	%	70.8	-0.1	-0.9	63.1	-0.1	-0.1
Long-term unemployed, Oct 98	no.	3 029	-15.1	20.0	231 891	-9.9	-6.0
Long-term unemployed as percentage of total unemployed	—	29.8	-2.7	10.5	33.8	0.2	0.3
Trend series							
Employed	'000	156.2	-0.4	0.6	8 664.8	0.1	2.1
Unemployed	'000	11.0	-1.8	-19.7	742.5	-0.8	-3.8
Unemployment rate	%	6.6	-0.1	-1.5	7.9	-0.1	-0.4
Participation rate	%	70.9	-0.4	-0.9	63.4	—	0.2
WAGE AND SALARY EARNERS, May 98							
Trend series							
Public Sector	'000	68.7	-1.0	1.9	1 460.0	0.1	-1.0
Private Sector	'000	69.3	1.2	-6.6	5 408.1	1.0	1.0
Total	'000	138.0	0.1	-2.5	6 868.1	0.8	0.6
JOB VACANCIES, August 98	'000	1.8	28.6	80.0	73.0	-0.4	5.3
INDUSTRIAL DISPUTES IN PROGRESS, Aug 98							
Working days lost	'000	0.3	—	200.0	54.9	167.8	68.9
Days lost per '000 employees (year ended Aug 98)	no.	33.0	6.5	50.0	82.0	3.8	30.2
BUILDING AND CONSTRUCTION							
HOUSING FINANCE, Oct 98							
Secured commitments to individuals for							
Original Series							
Construction of dwellings	\$m	5.0	-44.4	-37.5	721.0	-4.6	-0.3
Purchase of new dwellings	\$m	3.0	50.0	—	230.0	-1.7	-12.5
Purchase of established dwellings	\$m	58.0	5.5	5.5	3 626.0	2.9	-3.8
Re-financing	\$m	13.0	-7.1	8.3	720.0	-3.4	-12.2
Total housing commitments	\$m	84.0	-3.4	2.4	4 577.0	1.4	-3.8
Seasonally adjusted series							
Total housing commitments	\$m	88.0	8.6	11.4	4 581.0	3.7	0.7
Trend series							
Dwelling units financed	no.	737	1.4	0.3	36 891	-2.0	-8.1
Total housing commitments	\$m	84.0	2.4	3.7	4 490.0	-0.8	-1.7
BUILDING APPROVALS, Oct 98							
Original series							
Dwelling units	no.	88	-12.9	-38.0	12 328	-5.3	-2.9
Value of new residential	\$m	11.9	-4.0	-35.0	1 391.3	-1.4	3.9
Value of residential alterations and additions	\$m	6.6	32.0	6.5	239.1	-9.3	-8.5
Value of non-residential	\$m	3.8	-88.9	-82.0	1 123.5	18.4	-9.2
Value of total building	\$m	22.3	-56.9	-51.2	2 753.8	4.9	-2.9
Trend series							
Dwelling units	no.	129	-14.6	4.0	12 347	-1.5	-2.8

Indicator	Unit	ACT			Aust.		
		% change from			% change from		
		Latest figure	Previous period	Same period previous year	Latest figure	Previous period	Same period previous year
BUILDING AND CONSTRUCTION continued							
BUILDING COMMENCEMENTS, Jun qtr 98							
New houses	no.	237	-4.8	-29.3	26 207	9.7	21.9
Value of houses commenced	\$m	30.2	2.4	-23.7	3 034.4	14.1	28.1
Value of non-residential building commenced	\$m	87.8	-33.1	54.9	3 246.1	-8.3	21.0
Value of total commencements	\$m	135.9	-22.7	3.5	8 241.3	2.2	25.5
PRICE INDEXES							
Established house price index, Sep qtr 98	—	126.7	0.2	1.3	126.9	—	6.7
ENGINEERING CONSTRUCTION (Jun qtr 98)							
Private sector							
Value of work commenced	\$m	13.9	-44.2	52.7	2 560.4	-5.3	-11.9
Value of work done	\$m	12.6	-39.7	-10.6	2 901.1	1.0	23.2
Value of work yet to be done	\$m	12.2	24.5	-48.1	6 541.2	-0.5	8.7
Value of work done by public sector	\$m	30.3	31.2	25.2	1 982.5	28.1	4.3
PRICES, WAGES AND CONSUMER SPENDING							
CONSUMER PRICE INDEX , Sep qtr 98							
Food	(a)	127.6	0.6	3.8	124.7	1.3	3.2
Housing	(a)	93.8	0.4	-3.3	94.8	0.3	-1.1
Transportation	(a)	128.0	-0.9	-2.0	122.3	-0.4	-1.7
All groups	(a)	121.3	0.1	1.3	121.3	0.2	1.3
AVERAGE WEEKLY EARNINGS, Aug 98							
Original series							
Males	\$	839.6	1.7	7.7	721.8	1.0	4.0
Females	\$	613.2	2.4	6.3	473.8	1.2	3.0
Persons	\$	729.0	1.9	7.6	602.9	1.1	3.6
Trend series							
Males	\$	843.6	1.7	8.3	722.7	0.7	3.6
Females	\$	613.1	1.2	5.7	472.9	0.6	2.2
Persons	\$	732.4	1.6	7.7	602.9	0.7	3.0
RETAIL TURNOVER, Oct 98							
Original series							
Food retailing	\$m	83.4	4.6	-0.2	4 959.3	7.8	6.8
Department stores	\$m	23.5	9.3	1.3	1 012.0	6.5	3.6
Hospitality and services	\$m	39.5	7.0	14.8	2 106.0	8.9	10.4
All other retailing	\$m	82.5	5.8	7.0	3 988.8	5.2	2.9
Total	\$m	228.9	5.9	4.9	12 066.1	7.0	5.8
Trend series							
Food retailing	\$m	81.0	-0.2	1.1	4 754.4	0.5	5.6
Department stores	\$m	24.5	-0.8	0.4	1 024.2	-0.3	1.8
Hospitality and services	\$m	36.3	0.6	10.7	2 025.4	1.0	8.8
All other retailing	\$m	81.7	1.0	6.9	3 904.0	0.5	3.1
Total	\$m	223.5	0.3	4.6	11 708.0	0.5	5.0

(a) Base year: 1989-90=100.0.

Indicator	Unit	ACT			Aust.		
		% change from			% change from		
		Latest figure	Previous period	Same period previous year	Latest figure	Previous period	Same period previous year
TOURISM AND TRANSPORT							
HOTELS, MOTELS AND GUEST HOUSE ACCOMMODATION, Jun qtr 98							
Original series							
Room nights	'000	221.3	n.a.	5.6	8 724.6	-3.7	3.2
Takings at current prices	\$m	22.3	n.a.	7.2	881.1	n.a.	3.1
Guest arrivals	'000	176.9	n.a.	n.a.	7 145.0	n.a.	n.a.
Guest nights	'000	363.7	n.a.	n.a.	15 175.0	n.a.	n.a.
Room occupancy rate (Jun qtr 98)	%	59.1	n.a.	3.9	54.6	-5.9	-2.0
NEW MOTOR VEHICLE REGISTRATIONS, Oct 98							
Motor vehicles	no.	1 180	-4.7	-18.9	64 519	-1.1	-3.2
Seasonally adjusted motor vehicles	no.	1 198	1.5	-13.6	63 252	-4.9	-1.0
Trend motor vehicles	no.	1 243	-3.8	-10.2	65 527	-2.0	4.0
AGGREGATE INDICATORS							
STATE ACCOUNTS, 1996-97(a)							
Original series (at average 1989-90 prices)							
Private final consumption expenditure	\$m	4 981	3.6	n.a.	269 954	2.4	n.a.
Government final consumption expenditure	\$m	5 744	-2.7	n.a.	72 844	1.5	n.a.
Private gross fixed capital expenditure	\$m	755	2.6	n.a.	85 505	12.1	n.a.
Government gross fixed capital expenditure	\$m	593	24.6	n.a.	18 685	-5.6	n.a.
Final demand	\$m	11 972	-0.4	n.a.	446 989	3.6	n.a.
Gross state product	\$m	8 813	0.6	n.a.	450 575	3.0	n.a.
Original series (at current prices)							
Private final consumption expenditure	\$m	5 781	4.0	n.a.	318 480	4.0	n.a.
Government final consumption expenditure	\$m	7 011	0.6	n.a.	86 421	3.6	n.a.
Private gross fixed capital expenditure	\$m	804	-1.6	n.a.	86 304	7.9	n.a.
Government gross fixed capital expenditure	\$m	440	-14.6	n.a.	19 230	-5.2	n.a.
Final demand	\$m	14 037	1.3	n.a.	510 435	4.2	n.a.
Gross state product	\$m	10845	5.0	n.a.	516 306	4.9	n.a.

(a) Quarterly state final demand details are released as a special data service (product no. 5206.0.40.001).

Source: ABS Catalogue nos: 3101.0, 5242.0, 5609.0, 6202.0, 6203.0, 6302.0, 6321.0, 6354.0, 6401.0, 6408.0, 6416.0, 8501.0, 8634.0, 8635.8, 8731.0, 8752.0, 9214.0, 9301.0.

<i>Indicator</i>	<i>Unit</i>	<i>Latest period</i>	<i>NSW</i>	<i>Vic.</i>	<i>Qld</i>	<i>SA</i>	<i>WA</i>	<i>Tas.</i>	<i>NT</i>	<i>ACT</i>	<i>Aust.</i>
POPULATION	'000	Mar qtr 98	6 329.8	4 648.4	3 450.5	1 485.4	1 821.6	471.3	190.5	309.2	18 709.7
LABOUR FORCE											
Employed persons (trend)	'000	Nov 98	2 878.2	2 156.8	1 633.6	657.0	891.3	194.6	92.3	156.2	8 664.8
Unemployment rate (trend)	%	Nov 98	7.3	7.9	8.6	9.6	7.1	10.3	4.1	6.6	7.9
WAGE AND SALARY EARNERS											
Public sector (trend)	'000	May 98	472.6	313.8	278.2	117.3	146.7	41.1	21.7	68.7	1 460.0
Private sector (trend)	'000	May 98	1 910.7	1 425.4	910.3	381.4	549.2	115.8	46.0	69.3	5 408.1
Total public and private sector (trend)	'000	May 98	2 383.3	1 739.2	1 188.5	498.7	695.9	156.9	67.6	138.0	6 868.1
STATE ACCOUNTS(a)											
Gross state product at average 1989-90 prices	\$m	Yr 1996-97	152 378	118 338	74 768	31 094	50 665	8 910	4 945	4 981	269 954
Gross state product at current prices	\$m	Yr 1996-97	181 799	133 567	83 366	36 306	54 418	10 587	5 418	5 744	72 844
BUILDING APPROVALS											
Dwelling units approved	no.	Sep 98	4 010	3 325	2 818	742	1 413	139	239	88	12 328
Dwelling units approved (trend)	no.	Sep 98	4 312	3 090	2 381	688	1 595	127	212	129	12 347
Value of non-residential building approved	\$m	Sep 98	311.5	302.2	152.1	46.9	63.8	8.7	12.6	3.8	1 123.5
Value of all buildings approved	\$m	Sep 98	847.3	759.0	460.5	163.5	229.9	24.3	48.3	22.3	2 753.8
ENGINEERING CONSTRUCTION											
Value of engineering construction work done	\$m	Jun qtr 98	1 573.5	911.4	1 063.5	345.3	827.1	69.3	50.4	42.9	4 883.5
AVERAGE WEEKLY EARNINGS											
Full-time adult ordinary time (trend)	\$	Aug 98	757.9	732.0	700.1	693.7	748.6	695.3	747.2	861.2	736.7
RETAIL TRADE											
Retail turnover (trend)	\$m	Oct 98	4 018.4	2 785.0	2 224.5	887.6	1 167.8	265.7	128.0	223.5	11 708.0
HOTELS, MOTELS & GUEST HOUSE ACCOMMODATION											
Room nights occupied	'000	Jun qtr 98	2 890.3	1 415.7	2 372.2	479.7	824.3	226.0	295.1	221.3	8 724.6
Room occupancy rate	%	Jun qtr 98	56.3	53.9	54.1	53.6	54.5	44.7	54.2	59.1	54.6
NEW MOTOR VEHICLE REGISTRATIONS											
Trend	no.	Oct 98	22 925	16 569	12 173	4 265	6 470	1 244	638	1 243	65 527
	<i>Unit</i>	<i>Latest period</i>	<i>Syd.</i>	<i>Melb.</i>	<i>Bris.</i>	<i>Adel.</i>	<i>Perth</i>	<i>Hob.</i>	<i>Dar.</i>	<i>Canb.</i>	<i>Aust.</i>
CONSUMER PRICE INDEX											
Food	(b)	Sep qtr 98	125.1	123.6	123.9	125.9	126.5	124.7	125.2	127.6	124.7
Housing	(b)	Sep qtr 98	102.5	85.3	101.0	91.2	89.6	95.6	113.9	93.8	94.8
Transportation	(b)	Sep qtr 98	123.6	121.0	120.9	121.8	122.6	120.4	120.7	128.0	122.3
All Groups	(b)	Sep qtr 98	121.9	120.4	122.5	123.0	119.6	122.8	122.1	121.3	121.3
Average retail prices (cents)											
Milk, carton, supermarket sales	1 litre	Sep qtr 98	116	135	119	127	135	126	122	115	n.a.
Bread, white loaf, sliced, supermarket sales	680 g	Sep qtr 98	216	201	195	169	205	209	210	210	n.a.
Beef, rump steak	1 kg	Sep qtr 98	1 164	1 048	1 070	1 109	1 053	1 031	1 209	1 162	n.a.
Chicken, frozen	1 kg	Sep qtr 98	332	339	294	367	356	353	390	361	n.a.
Potatoes	1 kg	Sep qtr 98	108	111	114	62	130	72	108	120	n.a.
Coffee, instant (jar)	150 g	Sep qtr 98	662	608	617	570	583	608	615	591	n.a.
Scotch nip, public bar	30 ml	Sep qtr 98	339	315	264	359	377	265	327	263	n.a.
Private motoring petrol											
Leaded	1 litre	Sep qtr 98	72.6	69.8	61.4	71.0	71.6	77.4	79.2	74.9	n.a.
Unleaded	1 litre	Sep qtr 98	70.3	67.6	59.2	68.6	69.4	75.4	77.2	72.7	n.a.

(a) State estimates are not comparable to national estimates from the June quarter 1995 due to revised methodology used in Australian National Accounts, State Accounts (Cat. no. 5242.0).

(b) Base year: 1989-90=100.0.

<i>Indicator</i>	<i>Latest period</i>	<i>NSW</i>	<i>Vic.</i>	<i>Qld</i>	<i>SA</i>	<i>WA</i>	<i>Tas.</i>	<i>NT</i>	<i>ACT</i>	<i>Aust.</i>
POPULATION	Mar qtr 98	0.4	0.5	0.6	0.2	0.6	-0.1	0.7	0.1	0.4
LABOUR FORCE										
Employed persons (trend)	Nov 98	—	—	0.3	0.5	0.1	-0.1	0.7	-0.4	0.1
Unemployment rate (trend)	Nov 98	-0.1	-0.1	-0.1	-0.2	—	-0.2	—	-0.1	-0.1
WAGE AND SALARY EARNERS										
Pubic sector (trend)	May 98	—	0.7	-0.4	0.4	0.5	-0.2	-0.9	-1.0	0.1
Private sector (trend)	May 98	0.8	0.5	2.3	0.1	2.6	-0.2	-2.1	1.2	1.0
Total public and private sector (trend)	May 98	0.6	0.5	1.7	0.2	2.1	-0.2	-1.9	0.1	0.8
STATE ACCOUNTS(a)										
State final demand at 1989-90 prices (trend)	Yr 1996-97	2.8	2.6	5.2	0.8	3.3	0.2	4.6	3.6	2.4
State final demand at current prices (trend)	Yr 1996-97	6.2	4.2	5.7	1.0	4.2	2.7	7.3	-2.7	1.5
BUILDING APPROVALS										
Dwelling units approved (original)	Oct 98	7.2	1.9	9.3	17.0	-18.6	7.8	51.3	-12.9	-5.3
Dwelling units approved (trend)	Oct 98	-2.6	-1.9	-3.6	0.4	-2.9	0.8	1.4	-14.6	-1.5
Value of non-residential building approved	Oct 98	-48.0	-17.5	-48.8	-35.0	24.4	-35.1	-8.7	-88.9	18.4
Value of all buildings approved	Oct 98	-30.3	-5.8	-19.5	15.8	-10.2	-10.0	32.0	-56.9	4.9
ENGINEERING CONSTRUCTION										
Value of engineering construction work done	Jun qtr 98	17.9	16.3	15.4	13.7	-11.8	35.1	18.6	-2.5	10.5
AVERAGE WEEKLY EARNINGS										
Full-time adult ordinary time (trend)	Aug 98	1.0	1.3	1.1	1.4	1.9	0.6	0.7	1.4	1.2
RETAIL TRADE										
Retail turnover (trend)	Oct 98	0.3	0.7	0.6	0.5	0.4	0.2	0.9	0.3	0.5
HOTELS, MOTELS & GUEST HOUSE ACCOMMODATION										
Room nights occupied (trend)	Jun qtr 98	-4.2	-7.7	3.0	-7.3	-5.5	-32.4	25.3	-8.9	-3.7
Room occupancy rate (original)	Jun qtr 98	-3.5	-6.2	-0.2	-5.6	-4.0	-22.6	10.1	-5.7	-3.4
NEW MOTOR VEHICLE REGISTRATIONS										
Trend	Oct 98	-1.2	-1.5	-2.4	-3.9	-3.7	-3.9	-2.7	-3.8	-2.0

	<i>Latest period</i>	<i>Syd.</i>	<i>Melb.</i>	<i>Bris.</i>	<i>Adel.</i>	<i>Perth</i>	<i>Hob.</i>	<i>Dar.</i>	<i>Canb.</i>	<i>Aust.</i>
CONSUMER PRICE INDEX										
Food	Sep qtr 98	1.1	1.6	0.5	1.8	1.5	2.0	120.6	0.6	1.3
Housing	Sep qtr 98	1.2	-1.0	0.7	1.0	0.8	0.1	1.5	0.4	0.3
Transportation	Sep qtr 98	-0.4	-0.8	-1.5	—	1.2	-0.1	-0.4	-0.9	-0.4
All Groups	Sep qtr 98	0.4	0.1	0.2	0.5	0.6	0.7	0.2	0.1	0.2
Average retail prices (cents)										
Milk, carton, supermarket sales	Sep qtr 98	—	—	—	—	—	0.8	-1.6	0.0	n.a.
Bread, white loaf, sliced, supermarket sales	Sep qtr 98	2.4	6.3	1.6	4.3	2.0	13.6	0.5	4.5	n.a.
Beef, rump steak	Sep qtr 98	-3.2	1.6	2.5	-1.4	2.4	1.9	-3.0	3.4	n.a.
Chicken, frozen	Sep qtr 98	-3.8	0.9	1.0	2.8	—	6.3	1.0	2.6	n.a.
Potatoes	Sep qtr 98	4.9	2.8	-0.9	-18.4	2.4	-6.5	-7.7	8.1	n.a.
Coffee, instant (jar)	Sep qtr 98	8.0	-2.1	-3.0	-2.7	-5.8	-11.4	-3.3	-8.9	n.a.
Scotch nip, public bar	Sep qtr 98	—	3.3	1.5	1.4	-0.5	—	0.3	1.5	n.a.
Private motoring petrol										
Leaded	Sep qtr 98	-1.2	-1.6	-4.7	-2.9	-3.9	-0.1	-2.8	-1.6	n.a.
Unleaded	Sep qtr 98	-1.4	-1.6	-4.7	-3.0	-4.1	-0.1	-2.9	-1.5	n.a.

(a) State estimates are not comparable to national estimates from the June quarter 1995 due to revised methodology used in Australian National Accounts, State Accounts (Cat. no. 5242.0).

SELF-HELP ACCESS TO STATISTICS

PHONE Call 1900 986 400 for the latest statistics on CPI, Labour Force, Earnings, National Accounts, Balance of Payments and other topics. (Call cost is 75c per minute)

INTERNET <http://www.abs.gov.au>

LIBRARY A range of ABS publications is available from public and tertiary libraries Australia wide. Contact your nearest library to determine whether it has the ABS statistics you require.

WHY NOT SUBSCRIBE?

PHONE +61 1300 366 323

FAX +61 3 9615 7848

CONTACTING THE ABS

ABS provides a range of services, including: a telephone inquiry service; information consultancy tailored to your needs; survey, sample and questionnaire design; survey evaluation and methodological reviews; and statistical training.

<i>INQUIRIES</i>	<i>By phone</i>	<i>By fax</i>
Canberra	02 6252 6627	02 6253 1404
Sydney	02 9268 4611	02 9268 4668
Melbourne	03 9615 7755	03 9615 7798
Brisbane	07 3222 6351	07 3222 6283
Perth	08 9360 5140	08 9360 5955
Adelaide	08 8237 7400	08 8237 7566
Hobart	03 6222 5800	03 6222 5995
Darwin	08 8943 2111	08 8981 1218

POST Client Services, ABS, PO Box 10, Belconnen, ACT 2616

EMAIL client.services@abs.gov.au



2130380012985
ISSN 1320-808X

RRP \$15.50